

# Dress Me S Wall

/ Parete  
Wall

/ Interno  
Indoor



design by Chiara Frigerio - Andrea Roscini / 23 Bassi

## Dress Me S Wall

**Dress Me S Wall** è un corpo illuminante a parete in alluminio tornito e sorgente led arretrata dall'alta efficienza luminosa. È disponibile in versione 4W e 6W in tre differenti lunghezze. La possibilità di integrare l'alimentatore rende Dress Me S Wall estremamente versatile nell'uso. Inoltre, attraverso una speciale staffa di fissaggio può essere accoppiato per ottenere una doppia emissione.

*Dress Me S Wall is a wall light made of lathed aluminium and a retracted LED source with high luminous efficiency. It is available in 4W and 6W versions and in three different lengths. The possibility of integrating the power supply makes Dress Me S wall highly versatile. Furthermore, it can be coupled by means of a special fixing bracket in order to provide a double light emission.*



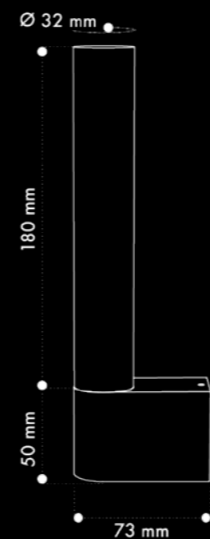
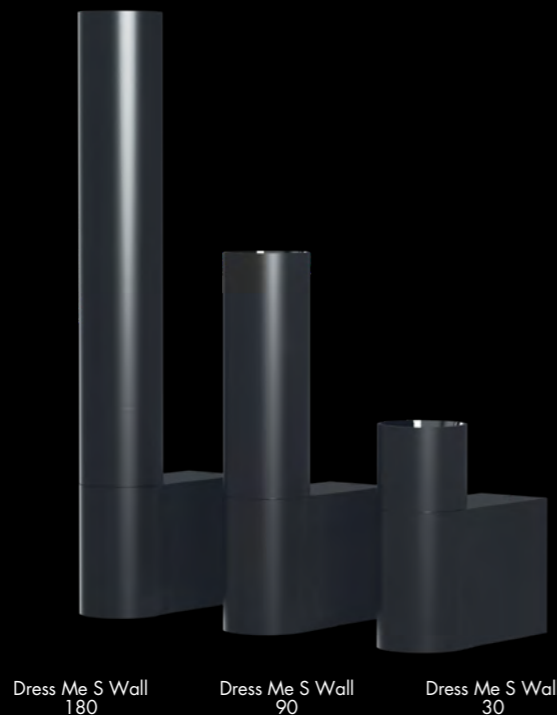
\* Grado IP adatto per installazioni in esterno / IP rate suitable for outdoor use



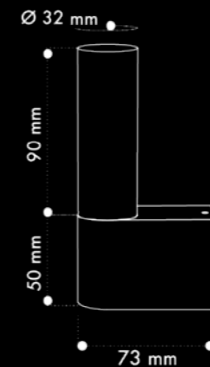
# Dress Me S Wall

/ Parete  
Wall

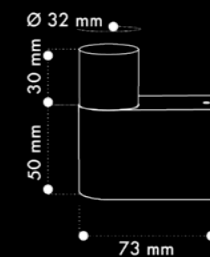
/ Interno  
Indoor



Dress Me Wall 180



Dress Me Wall 90



Dress Me Wall 30

6°



10°



18°



Prodotto Product	Potenza Power	Flusso Luminoso Luminous Flux	Alimentazione Supply	CRI CRI	Angolo Angle	Temperatura Colore Color Temperature
Dress Me S Wall 30	4W	489lm	350 mA	≥ 90	18°	2700-3000-4000K
	6W	664lm	500 mA	≥ 90	18°	2700-3000-4000K
Dress Me S Wall 90	4W	489lm	350 mA	≥ 90	10°	2700-3000-4000K
	6W	664lm	500 mA	≥ 90	10°	2700-3000-4000K
Dress Me S Wall 180	4W	489lm	350 mA	≥ 90	6°	2700-3000-4000K
	6W	664lm	500 mA	≥ 90	6°	2700-3000-4000K



## Finiture Finishes



## Accessori, varianti e supplementi Accessories, variants and supplements

Disponibile versione 220 Vac con alimentatore integrato non dimmerabile / Available 220Vac version with integrated not dimmable power supply

Disponibile versione IP54 / Available IP54 version