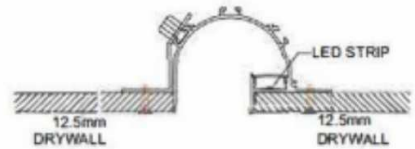
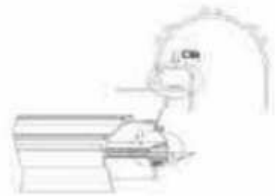


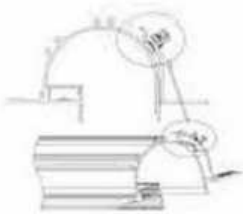
COVEA – CEILING INSTALLATION INSTRUCTIONS



Step 01:
Stick led strip



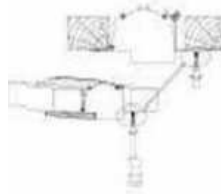
Step 02:
Push the diffuser inside



Step 03:
Fix the frame on profile



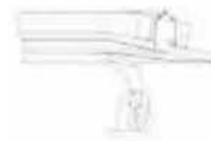
Step 04:
Fix end caps



Step 05:
Fix the whole profile
on wooden frame



Step 06:
Install the ceiling
plasterboard



Step 07:
Paint the plaster



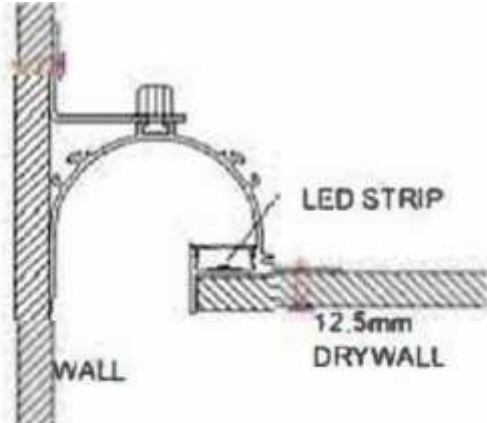
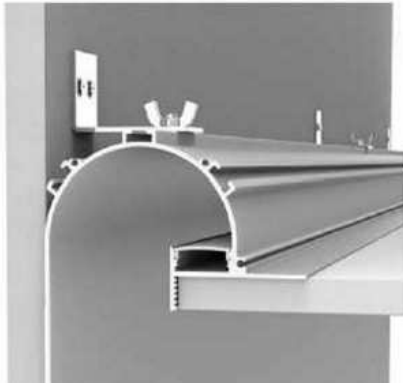
Step 08:
Paint lacquer
(overcoating)





GINEICO

COVEA – CEILING & CEILING INSTALLATION INSTRUCTIONS



Step 01



Step 06



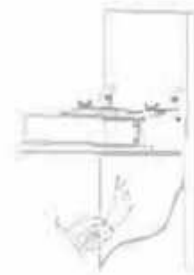
Step 02



Step 07



Step 03



Step 08



Step 04



Step 05



Step 09



G45, 76-84 WATERWAY DRIVE COOMERA, QUEENSLAND, 4209, AUSTRALIA

Phone: +61 417 950 455

Email: showroom@gineico.com

WWW.GINEICOLIGHTING.COM.AU