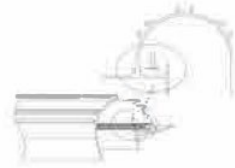


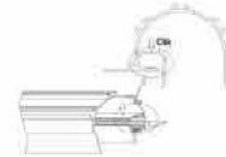
COVEA – CEILING INSTALLATION INSTRUCTIONS



Step 01:
Stick led strip



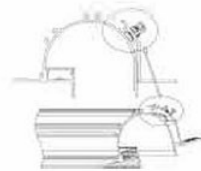
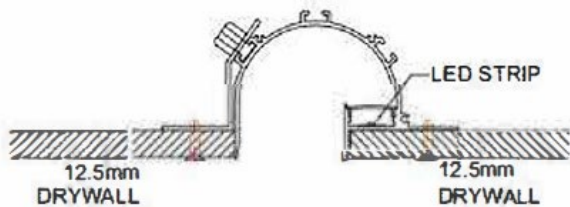
Step 05:
Fix the whole profile
on wooden frame



Step 02:
Push the diffuser inside



Step 06:
Install the ceiling
plasterboard



Step 03:
Fix the frame on profile



Step 07:
Paint the plaster



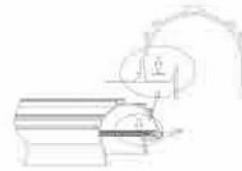
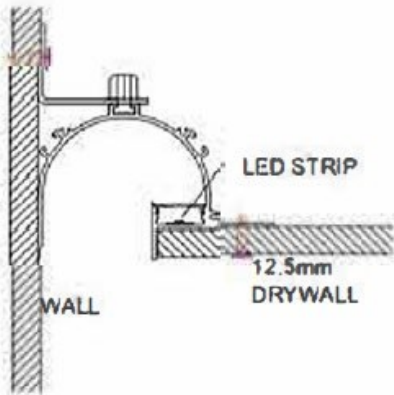
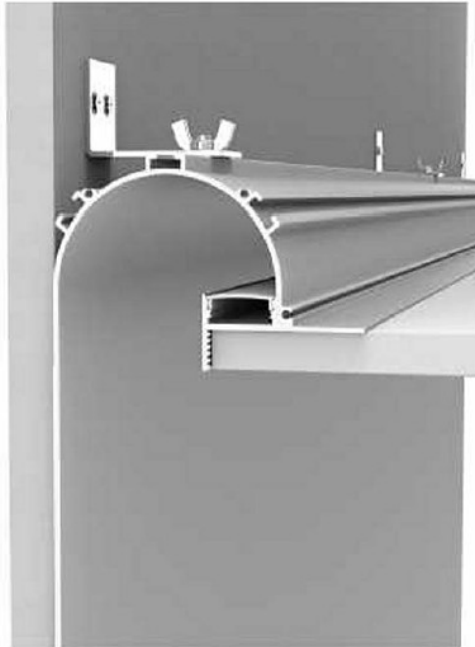
Step 04:
Fix end caps



Step 08:
Paint lacquer
(overcoating)



COVEA – WALL & CEILING INSTALLATION INSTRUCTIONS



Step 01



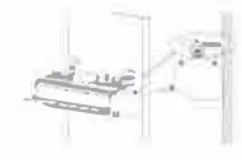
Step 02



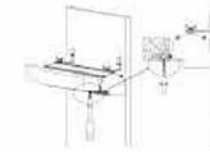
Step 03



Step 04



Step 05



Step 06



Step 07



Step 08



Step 09



AIR EXTRACTION COUPLING (OPTIONAL) INSTALLATION INSTRUCTIONS

