

# UNDERLINE

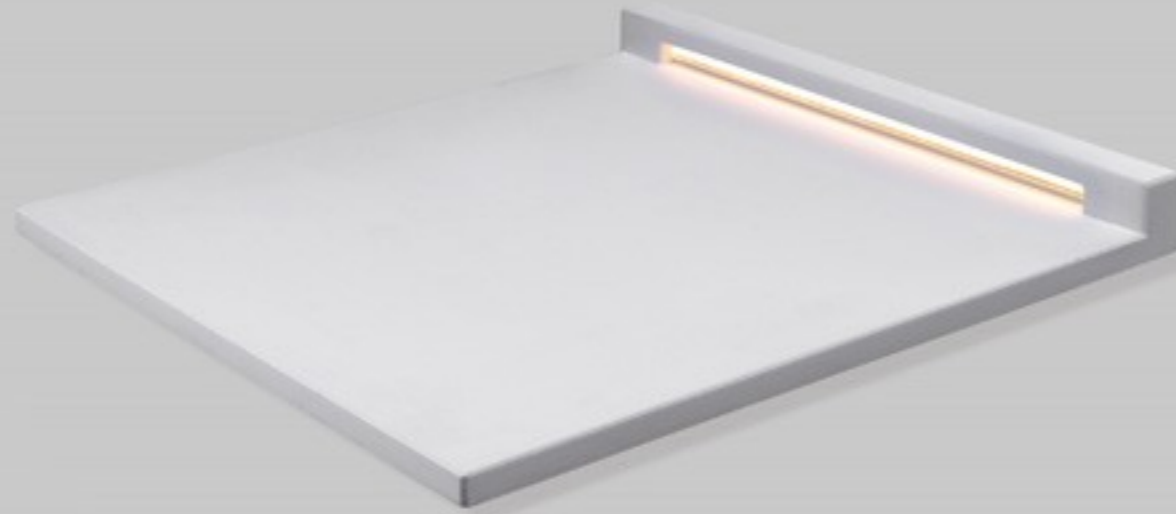


**PIASTRELLA LUMINOSA  
IN TECNOCEMENTO DURCORAL**

Alto indice di protezione da agenti esterni per Underline, apparecchio da terra calpestabile, ideale per installazioni all'aperto grazie al grado di protezione IP68.  
Una luce integrata nella pavimentazione, dal design geometrico realizzata in DurCoral, l'innovativo brevetto Buzzi & Buzzi che ha resistenza meccanica superiore al calcestruzzo ed è quindi in grado di integrarsi con qualsiasi pavimentazione. Con 5.5W di potenza LED, questo apparecchio non solo è un ottimo segnapasso, ma permette anche di valorizzare gli spazi outdoor.

**LUMINOUS TILE  
IN DURCORAL TECHNO-CEMENT.**

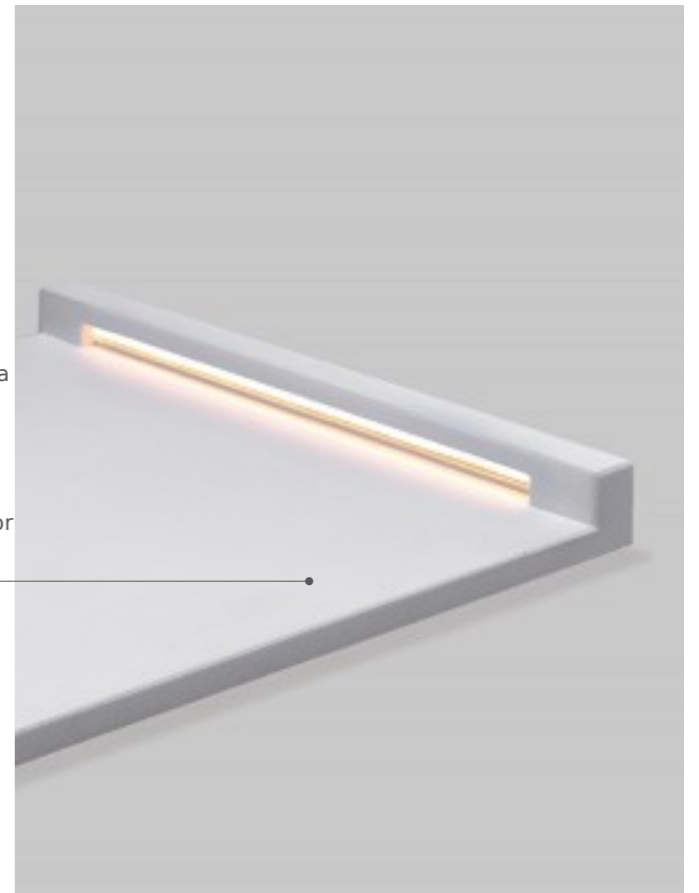
High protection index from external agents for Underline, the ground walkable luminaire, ideal for outdoor installations, thanks to its IP68 level of protection.  
A light built into the paving, with a geometrical design made in DurCoral, the innovative Buzzi & Buzzi patent with a mechanical strength higher than concrete and can therefore be built into any type of paving. With a LED power of 5.5W, this luminaire is not only an excellent footpath light, but can be also used to enhance outdoor areas.



**LUCE INTEGRATA  
NELLA PAVIMENTAZIONE  
LIGHT INTEGRATED  
IN THE PAVING**

può essere appoggiato direttamente sul terreno (senza scavi) oppure incollato su un basamento preesistente

it can be rested directly on the ground (without excavations) or glued onto a pre-existing base



**IP68**

alto indice di protezione da agenti esterni

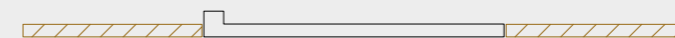
high protection index from external agents

**INSTALLATION**

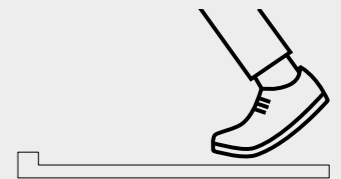
installazione sopra il terreno / installation above the ground

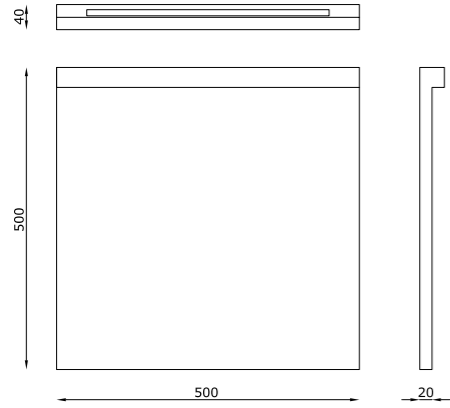


installazione a filo terreno / installation level with the ground



Underline è pedonabile  
Underline is walkable







CODE COMPOSITION

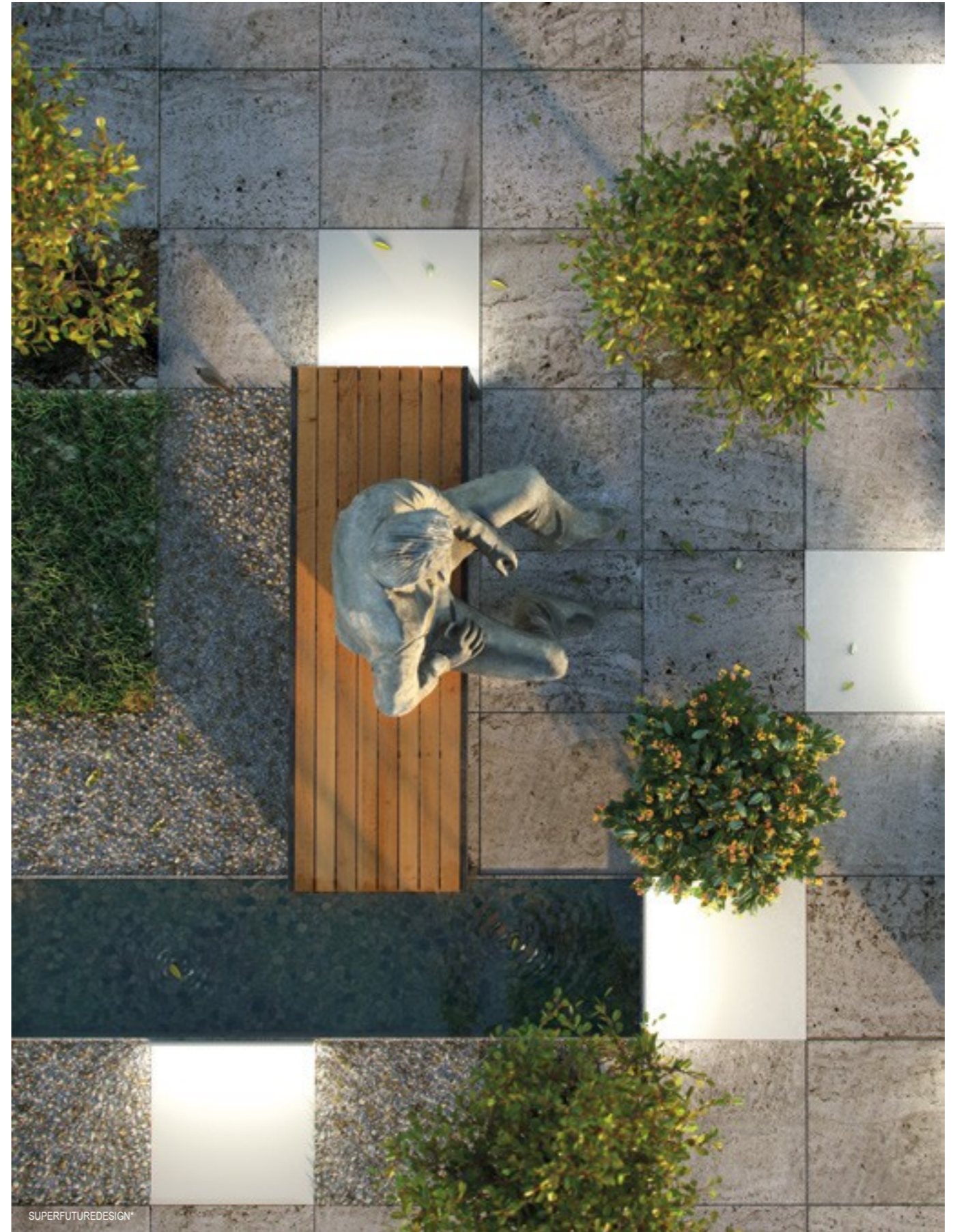
17 41.DC

TECHNICAL FEATURES

Code	17 41.DC
Type	Ground lamp 
Material	DC: DurCora®
Weight	11 Kg
Mounting	Ground lamp
IP rating	IP68
Insulation class	II
Control gear	Remote constant voltage driver (not included)
Lamp type	LED 24V 
Lamp wattage	1 x 5.5W
Luminous efficacy	40 lm/W - 3000K
Light distribution	Wide beam 120°
Fitting	-
Light colour	White 3000K
Light hole	400 x 15 mm
Voltage connection	By driver (optional)
CRI	90
Emergency	-
Energy efficiency class	A**
Note	On request available dimmable PUSH or DALI, remote installation.

OPTIONAL ACCESSORIES

product code	optional code	description	info
17 41.DC	H8024.D	Constant voltage driver. Remote installation	Suitable for n°3 code 1741.DC - 24V



SUPERFUTUREDESIGN®