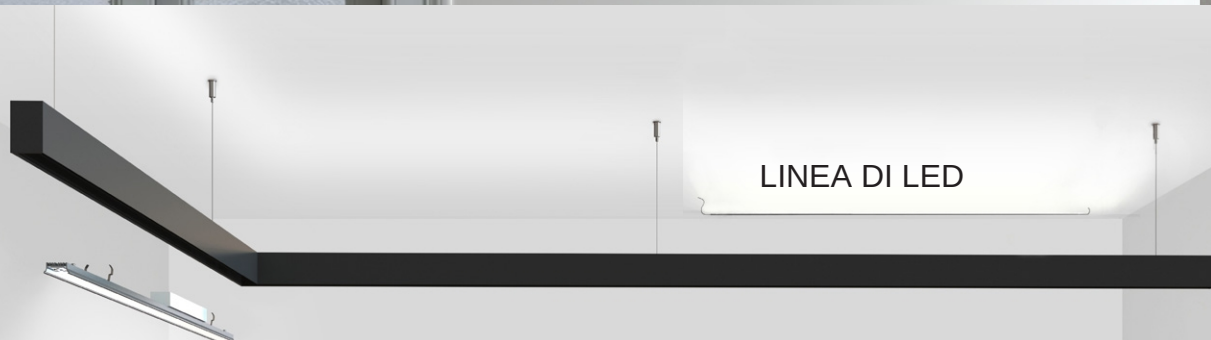


# FILE

## SUSPENSION SYSTEM



LINEA DI LED

REGLETTE/LINEA DI LUCE



LEVA



FARETÈN



MINISPOT

242

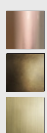
Elementi luminosi da p. 246 | Lighting elements from p. 246

FINISHING



- /01** bianco/white
- /02** nero/black
- /27** alluminio anodizzato / anod.alum
- /49** moka/moka

PREMIUM FINISHING



- /81** oro rosa shine/shine pink gold
- /82** bronzo/ bronze
- /83** ottone spazzolato/ brushed brass

HOW TO CREATE THE CODE: **###**  
**F1000/01**

CODE

**F1000** /### — finishing

base code

replace with the required measure in mm.



G45, 76-84 WATERWAY DRIVE COOMERA, QUEENSLAND, 4209, AUSTRALIA

PHONE: (+61) 7 5556 0244

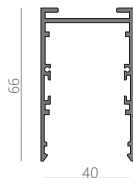
EMAIL: SALES@GINEICOMARINE.COM.AU

WWW.GINEICOMARINE.COM.AU

## SUSPENSION EMPTY PROFILE



L.mm	Kg	CODE
1000	0.95	<b>LTB43.1000 /##</b>
2000	2.00	<b>LTB43.2000 /##</b>
3000	2.60	<b>LTB43.3000 /##</b>
-----		<b>LTB43.misura /##</b>



## COUPLE OF CLOSURE HEADS



CODE  
**LT2403 /##**

## STEEL SUSPENSION KIT



L.mm	Kg	CODE
2000	0.16	<b>LT2410</b>
4000	0.32	<b>LT2410.4000</b>

Uno ogni 2 m. minimo 2 | One every 2 m, 2 pieces minimum

## POWER CABLE KIT WITH CEILING CANOPY



Dim.	Kg	CODE	CODE
		L. 2000mm	L. 4000mm
3X0,75	0.18	<b>LT2411/01</b>	<b>LT2411.4000/01</b>
4X0,75	0.26	<b>LT2412/01</b>	<b>LT2412.4000/01</b>
5X0,75	0.30	<b>LT2412.5/01</b>	<b>LT2412.5.4000/01</b>
7X0,75	0.30	<b>LT2412.7/01</b>	<b>LT2412.7.4000/01</b>
9X0,75	0.30	<b>LT2412.9/01</b>	<b>LT2412.9.4000/01</b>

## LINEAR CONNECTORS COUPLE



CODE  
**LT2406**

## ANGLE CONNECTORS COUPLE



CODE  
**LTM211.90**

## ANGLE CONNECTORS COUPLE FOR INSTALLATION ON DIFFENT PLANES



CODE  
**LTM211.90P**

## OPAL WHITE POLYCARBONATE DIFFUSER



L.mm	Kg	CODE
1000	0.16	<b>LT239P.1000</b>
2000	0.33	<b>LT239P.2000</b>
3000	0.50	<b>LT239P.3000</b>
-----		<b>LT239P.misura</b>

## MICROPRISMATIC POLYCARBONATE DIFFUSER

Controlled luminance microprismatic diffuser (conforms to standard EN 12464-1)



L.mm	Kg	CODE
1000	0.16	<b>LT239X.1000</b>
2000	0.33	<b>LT239X.2000</b>
3000	0.50	<b>LT239X.3000</b>
-----		<b>LT239X.misura</b>

## ALUMINIUM CLOSING COVER



Molle include/springs include	l.mm	CODE
n. 2	1000	<b>F16.1000/##</b>
n. 3	2000	<b>F16.2000/##</b>
n. 4	3000	<b>F16.3000/##</b>
-----		<b>F16.misura/##</b>

## SPRING FOR CLOSING COVER



CODE  
**F1.MLC**

Una ogni 70 cm da ordinare solo in caso di tagli della piastra di chiusura  
| One every 70 cm. To be ordered in case of cut of the closing cover.

## OPAL INDIRECT WHITE POLYCARBONATE DIFFUSER



L.mm	Kg	CODE
1000	0.16	<b>LT240P.1000</b>
2000	0.33	<b>LT240P.2000</b>
3000	0.50	<b>LT240P.3000</b>
-----		<b>LT240P.misura</b>

## 24W/M LED BATTEN



| Driver included

LED 24W/m		lm product 3000K/diffuser		
W	L.mm	with opal diffuser	with microprismatic diffuser	CODE
12,8	560	721	964	<b>R18FM0.8</b> ●●
19,2	840	1082	1446	<b>R18FM1.0</b> ●●
25,6	1120	1442	1928	<b>R18FM2.0</b> ●●
32	1400	1803	2410	<b>R18FM3.0</b> ●●
38,4	1680	2163	2892	<b>R18FM4.0</b> ●●
44,8	1985	2524	3374	<b>R18FM5.0</b> ●●
51,2	2240	2884	3856	<b>R18FM6.0</b> ●●

| Available for the following sizes: 560, 1120, 1680, 2240mm. The devices with variable color temperature (Tunable White) are supplied with integrated DALI power supply.

\*\*Attention: do not combine dimmable modules with codes R18FM0.8#D with other larger modules because they might have different dimming results.

## 32W/M LED BATTEN

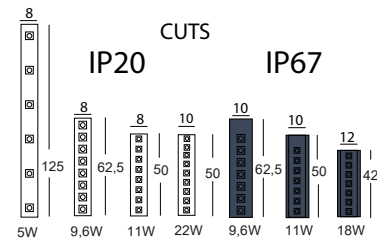


Alimentatore incluso | Driver included

LED 32W/m		lm product 3000K/diffuser		
W	L.mm	with opal diffuser	with microprismatic diffuser	CODE
18	560	1119	1309	<b>R18FH0.9</b> ●●
27	840	1679	1964	<b>R18FH1.9</b> ●●
36	1120	2238	2618	<b>R18FH2.9</b> ●●
45	1400	2798	3273	<b>R18FH3.9</b> ●●
54	1680	3357	3927	<b>R18FH4.9</b> ●●
63	1960	3917	4582	<b>R18FH5.9</b> ●●
72	2240	4476	5236	<b>R18FH6.9</b> ●●
81	2520	5036	5891	<b>R18FH7.9</b> ●●
90	2800	5595	6545	<b>R18FH8.9</b> ●●

○ 2700K non disponibile | 2700K not available

## LED LINE 5 METERS ROLL



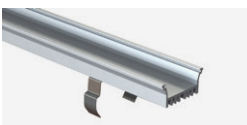
Linea di luce Led IP20 24V								
W/m	V	Led/m	lm/m	lm/W	CRI	IP	L.mm	CODE
5,5	24	60	270	49	80	20	5000	<b>ST0.5</b>
9,6	24	120	540	56	80	20	5000	<b>ST10.5</b>
11	24	180	1200	109	80	20	5000	<b>ST19.5</b>
22	24	168	3015	139	80	20	5000	<b>ST22.5</b>
13+13	24	80+80	2120+2230	2700-6500K	cut	50mm	20 5000	<b>ST22.TW.5</b>

Linea di luce Led IP67 24V								
W/m	V	Led/m	lm/m	lm/W	CRI	IP	L.mm	CODE
9,6	24	120	540	56	80	67	5000	<b>ST10.5IP</b>
11	24	160	1660	151	80	67	5000	<b>ST19.5IP</b>
18	24	168	1964	109	80	67	5000	<b>ST20.5IP</b>

Linea di luce RGB - RGBW 24V								
W/m	V	Led/m	lm/m	Beam	Type	CUT	L.mm	CODE
95W	24	60	270	120°	RGB + White	3000K100	5000	<b>ST20.RGBW.5</b>
100W	24	120	540		RGB + White	2700K100	5000	<b>ST19.RGBW.5IP</b>
100W	24	168	3015		RGB + White	2700K100	5000	<b>ST19.RGBW.5</b>

Strip led ad alta efficienza con biadesivo e supporto di larghezza 8-12 mm su bobina da 5 metri, da alimentare con driver stabilizzati in tensione da 24Vdc. Classe di isolamento III. | High efficiency strip led with biadhesive and support of 8-12 mm wide on 5 meters roll. To be fed with 24Vdc voltage-stabilized driver. Insulation class III.

## DIRECT EMISSION HEATSINK FOR STRIP LED



molle incluse/ included springs	L.mm	CODE
n.2	1000	<b>LTC1.1000/27</b>
n.3	2000	<b>LTC1.2000/27</b>
n.3	3000	<b>LTC1.3000/27</b>
-----	-----	<b>LTC1.misura/27</b>

## SINGLE SPRING

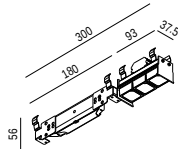


CODE  
**LTC1.ML**  
1 ogni metro / 1 every meter

In caso di tagli ordinare altre molle / Should you need to cut on-site, please order more springs



3 LAMPS MODULE

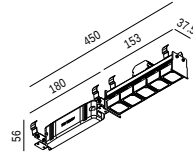


lm product/beam 3000K

W	Kg	S20°	F32°	W50°	Z 41°X18° CODE
6,6	1,00	601	558	496	526 <b>LV152.0</b> /##

Ordinare la piastra a copertura dell'alimentatore | Order the plate to cover the power supply

5 LAMPS MODULE

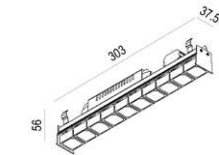
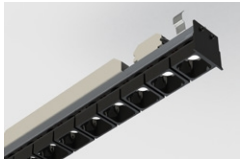


lm product/beam 3000K

W	Kg	S20°	F32°	W50°	Z 41°X18° CODE
11	2,00	1002	931	828	877 <b>LV153.0</b> /##

Ordinare piastra a copertura dell'alimentatore | Order the plate to cover the power supply

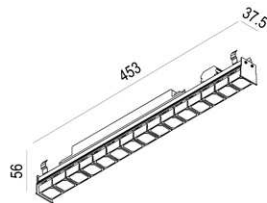
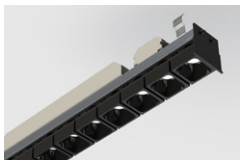
10 LAMPS MODULE



lm product/beam 3000K

W	Kg	S20°	F32°	W50°	Z 41°X18° CODE
22	3,00	2004	1862	1656	1754 <b>LV154.0</b> /##

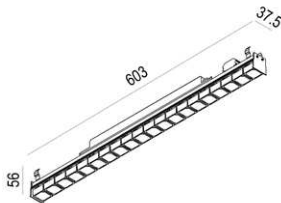
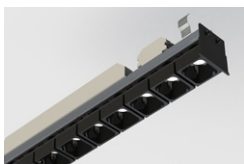
15 LAMPS MODULE



lm product/beam 3000K

W	Kg	S20°	F32°	W50°	Z 41°X18° CODE
33	4,00	3006	2793	2484	2631 <b>LV155.0</b> /##

20 LAMPS MODULE



lm product/beam 3000K

W	Kg	S20°	F32°	W50°	Z 41°X18° CODE
44	6,00	4008	3724	3312	3508 <b>LV156.0</b> /##

AVAILABLE VERSION

**KELVIN**

- 27** 2700K
- 30** 3000K
- 40** 4000K

**FASCIO/BEAM**

- S** Spot
- F** Flood
- W** Wide
- Z** Asymmetric

Per i gradi vedere in tabella - For degree check the table

**DIMMABLE** (OPTIONAL)

- D** Dali Touch & Dimm

HOW TO CREATE THE CODE: **F1000.827S0/01**



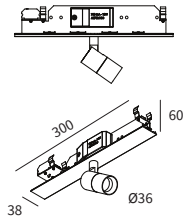
FINISHING

- /01** paratia bianca, ottica nera/white plate, black optic
- /02** paratia nera, ottica nera/black plate, black optic
- /41** paratia bianca, ottica bianca/plate heads, white optic
- /42** paratia nera, ottica oro/black plate, gold optic
- /43** paratia moka, ottica nera/moka plate, black optic
- /45** paratia moka, ottica oro/moka plate, gold optic



CHOICE COLOUR OF THE PLATE LIKE PROFILE

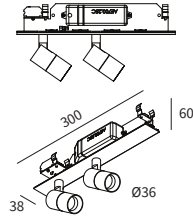
**FARETÈN FOCUS 41S**



LED		Im product/beam 3000K					
W	ø	H	L.mm Kg	S19°	F28°	Z18°x38°	CODE
8	36	85	300x38 0.47	665	695	508	<b>FR040.</b> ●●●/##

Accessori - accessories: L036#.A: Anello ø36 + lente | lens with ring ø36  
 ● Disponibili solo fascio **S, F, Z** | Available only **S, F, Z** beam

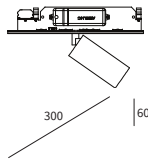
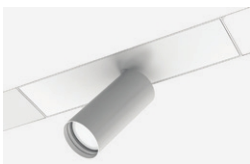
**FARETÈN FOCUS 42S**



LED		Im product/beam 3000K					
W	ø	H	L.mm Kg	S19°	F28°	Z18°x38°	CODE
2x8	36	85	300x38 0.70	1330	1390	1016	<b>FR041.</b> ●●●/##

Accessori - accessories: L036#.A: Anello ø36 + lente | lens with ring ø36  
 ● Disponibili solo fascio **S, F, Z** | Available only **S, F, Z** beam

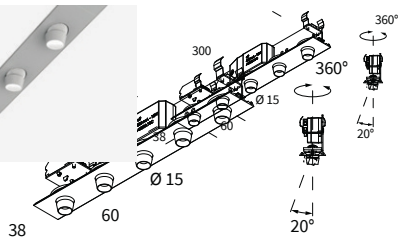
**FARETÈN FOCUS 55S**



LED		Im product/beam 3000K				
W	ø	H	L.mm Kg	F27°	W48°	CODE
12	55	115	300x38 0.63	1285	1289	<b>FR042.</b> ●●●/##
18	55	115	300x38 0.63	1575	1579	<b>FR043.</b> ●●●/##

Accessori - accessories: L055#.A: Anello ø55 + lente | lens with ring ø55  
 ● Disponibili solo fascio **F e W** | Available only **F** and **W** beams

**FARETÈN MINISPOT S**



LED		Im product/beam 3000K		
W	ø	L.mm Kg	F28°	CODE
5x1,5	20	300 0.40	685	<b>FR023.</b> ●●●/##

● Disponibile solo fascio **F** | Available only **F** beam

ACCESSORIES

LENSES WITH RING



	ø	Kg	CODE
LENTE SATINATA / SATINED LENS	36	0.01	<b>L036S.A/ ##</b>
LENTE ELISSOIDALE / ELIPSOID LENS	36	0.01	<b>L036E.A/ ##</b>
LENTE ASIMMETRICA / ASYMMETRIC LENS	36	0.01	<b>L036A.A/ ##</b>
FILTRO NIDO D'APE/ HONEY COMB LENS	36	0.01	<b>L036R.A/ ##</b>

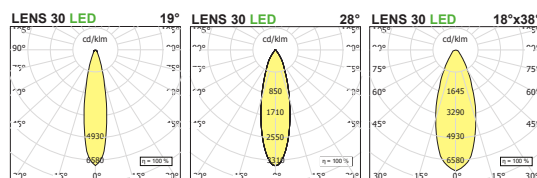
	ø	Kg	CODE
LENTE SATINATA / SATINED LENS	55	0.01	<b>L055S.A/ ##</b>
LENTE ELISSOIDALE / ELIPSOID LENS	55	0.01	<b>L055E.A/ ##</b>
LENTE ASIMMETRICA / ASYMMETRIC LENS	55	0.01	<b>L055A.A/ ##</b>
FILTRO NIDO D'APE/ HONEY COMB LENS	55	0.01	<b>L055R.A/ ##</b>

- /FINISHING
- /01bianco/white
- /02nero/black

PREMIUM FINISHING FOR PROJECTOR

- /81oro rosa shine/shine rose gold
- /82bronzo/ bronze
- /83cune spazzolato/ brushed brass

focus 41-42s



focus 55

